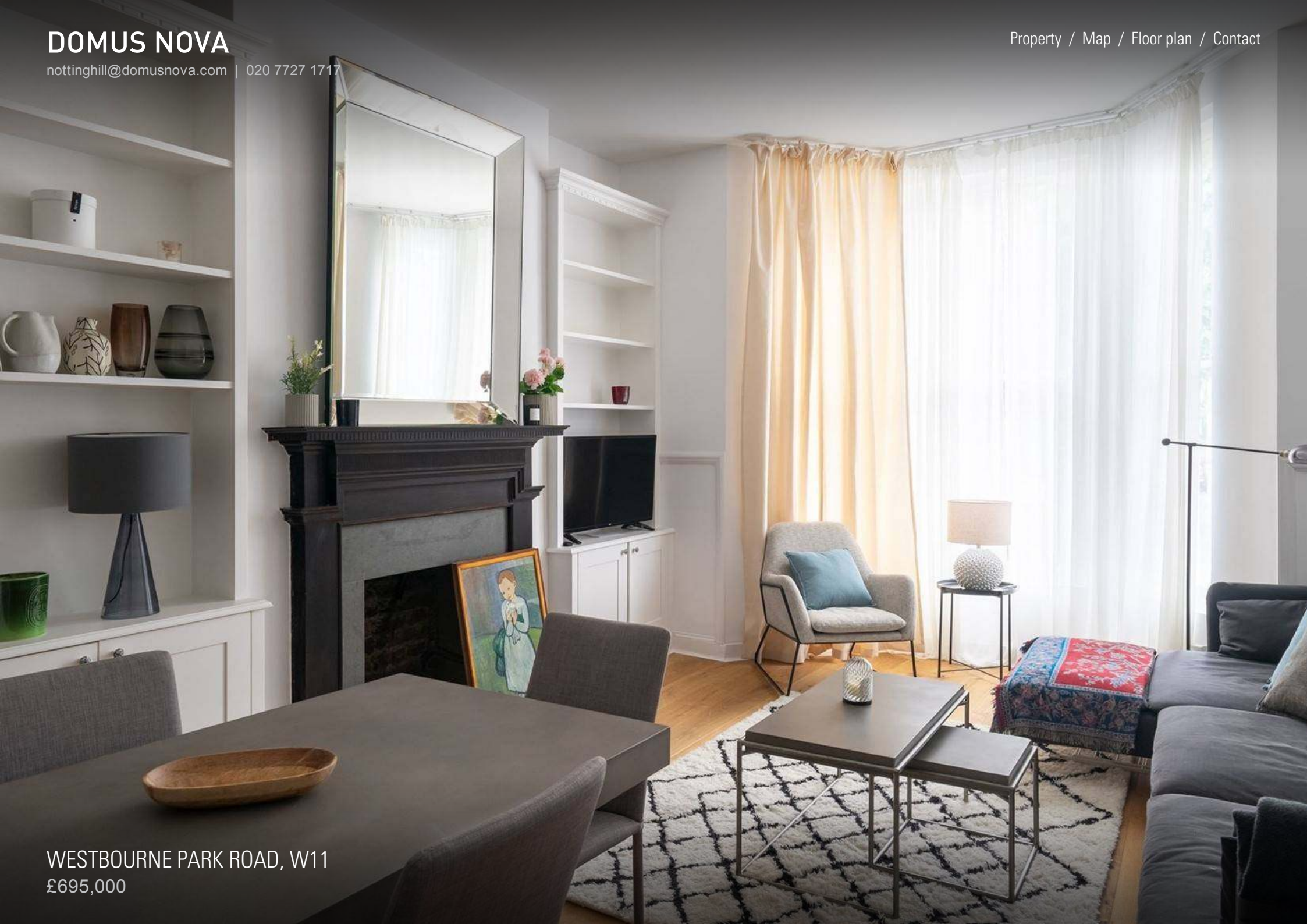


DOMUS NOVA

nottinghill@domusnova.com | 020 7727 1717

[Property](#) / [Map](#) / [Floor plan](#) / [Contact](#)



WESTBOURNE PARK ROAD, W11

£695,000

Westbourne Park Road, W11

£695,000

Arranged over the raised ground floor and recently refurbished to an impeccable standard is this one-bedroom apartment. Exuding modern city living, the open-plan reception / kitchen features elevated ceilings, large sash windows and a grand fireplace, offering the ideal pocket to play host and entertain.

Westbourne Park Road is close to some fantastic gems of Notting Hill, including Portobello Road and Ledbury Road.

- Open-plan reception and kitchen
- Contemporary kitchen
- Master bedroom
- One bathroom
- Royal borough of Kensington & Chelsea
- Approx. 559 sq ft / 51.9 sq m. EPC=D



DOMUS NOVA

Map

 Westbourne Park Road, W11

Local Information

Architecture

- 1 Duck & Shed
- 2 AMPS
- 3 Kohn Pedersen Fox Associates

Art & Culture

- 1 Electric Cinema
- 2 Flow Gallery
- 3 London WEST BANK Gallery

Design

- 1 Ross Lovegrove
- 2 Graham & Green
- 3 Themes & Variations

Fashion

- 1 Oliver Goldsmith
- 2 Alice Temperley
- 3 Caramel

Food & Drink

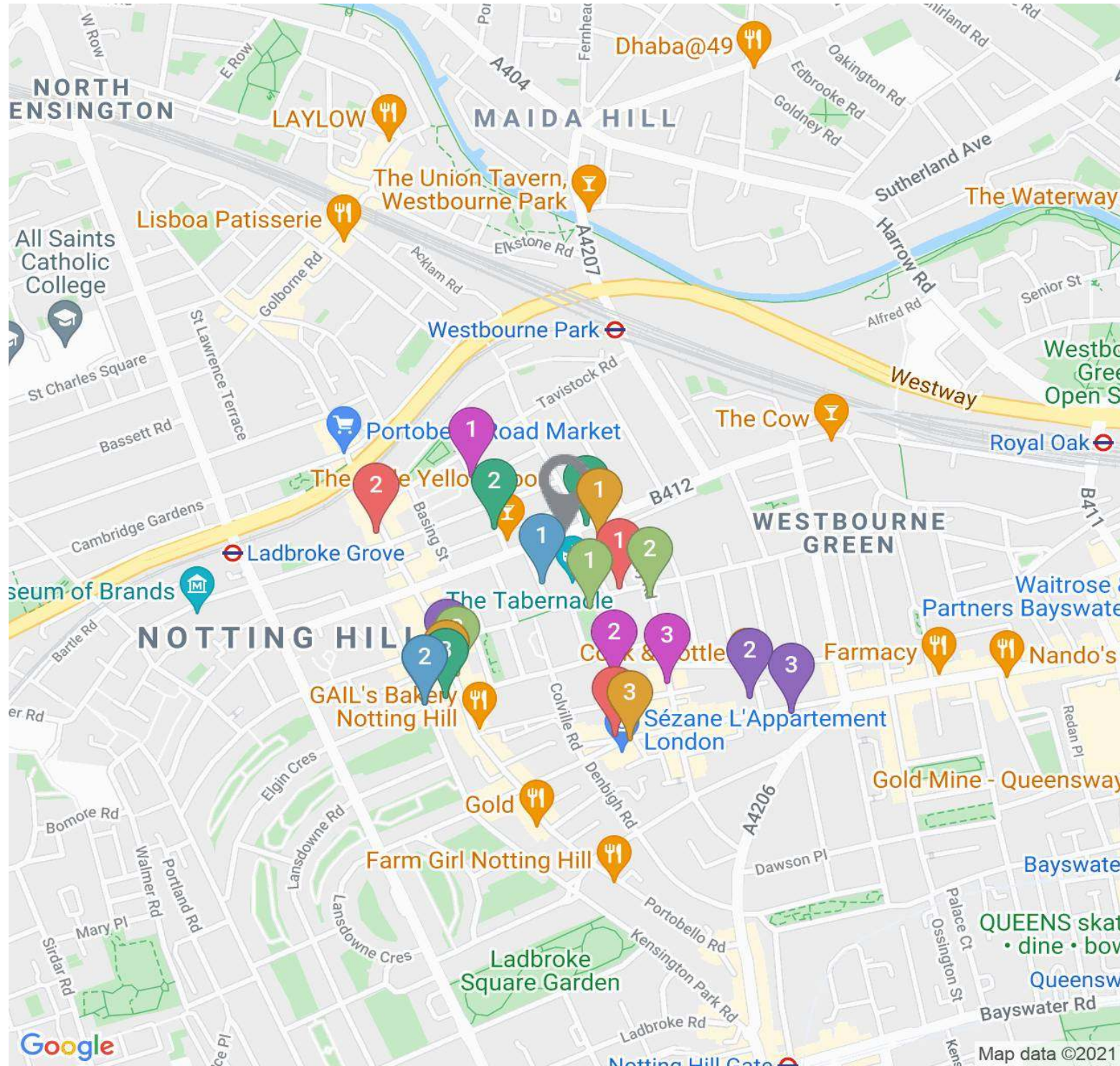
- 1 Raoul's
- 2 The Ledbury
- 3 Electric Diner

Indulge

- 1 Strip
- 2 Coco Nail Bar
- 3 Bodyism

Shopping

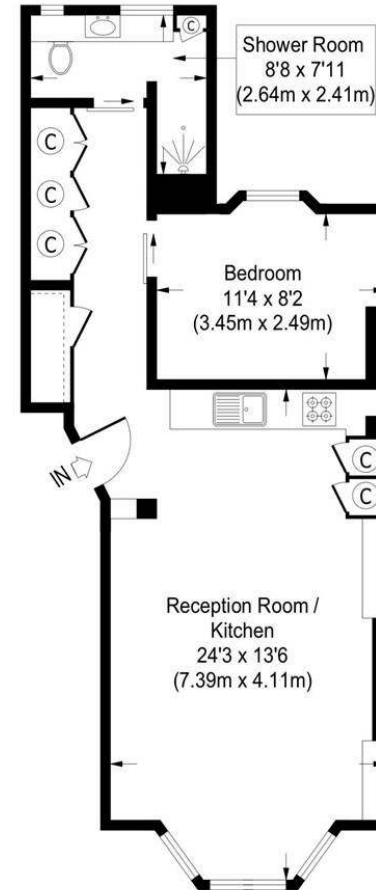
- 1 Mutz Nutz
- 2 Portobello Music
- 3 Mr Christian's



Floor plan

This image is illustrative only

(Not to scale)



Raised Ground Floor

= Reduced headroom below 1.5 m / 5'0

Approximate Gross Internal Area
559 Sq.Ft. / 51.9 Sq.M.

Floor Plans are for illustrative purposes only and not to scale.
Compliant with RICS code of measuring practice.

Contact

1 Domus Nova Notting Hill

17 Kensington Park Road, London W11 2EU

020 7727 1717

nottinghill@domusnova.com

2 Domus Nova Bayswater

78 Westbourne Grove, London W2 5RT

020 7221 7817

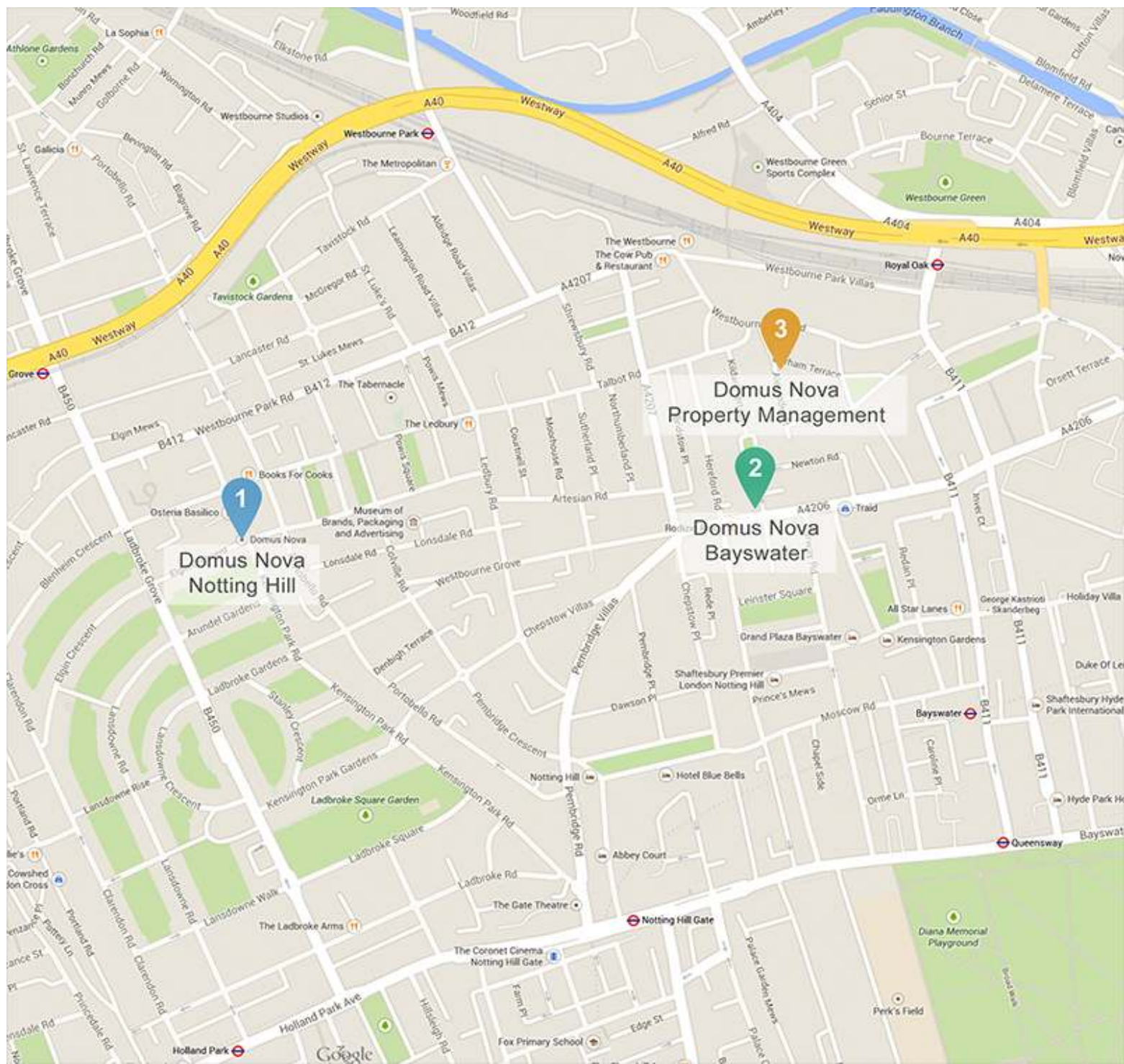
bayswater@domusnova.com

3 Domus Nova Property Management

37 Alexander Street, London W2 5NU

020 7908 9338

management@domusnova.com





DOMUSNOVA.COM