

WESTBOURNE GROVE, W11

£899,950

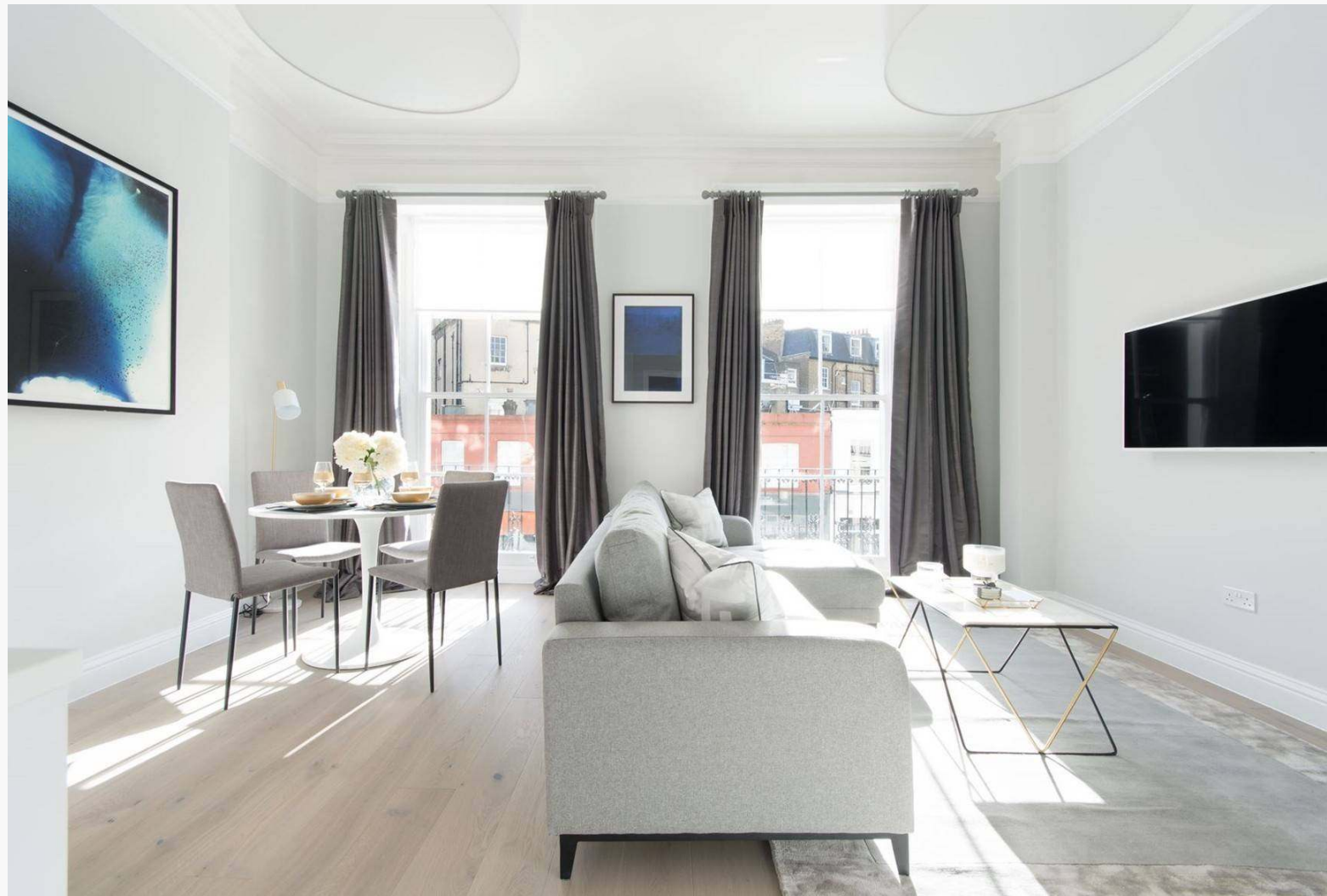
Westbourne Grove, W11

£899,950

Situated in a stunning, traditional Notting Hill townhouse this recently refurbished, one-bedroom apartment has blonde wooden floors, lustrous white finishes and large sash windows that lead out to a private balcony.

The property is situated on Westbourne Grove close to Granger & Co and the many other bars, restaurants and boutiques within the immediate area.

- Open plan reception room / dining room
- Modern integrated kitchen
- Master bedroom
- One bathroom
- Private balcony
- Royal Borough of Kensington & Chelsea
- Approx. 550 sq ft / 51.1 sq m. EPC=C





DOMUSNOVA

Map

 Westbourne Grove, W11

Local Information

Architecture

- 1 Atelier Chang
- 2 Robin Monotti Architects
- 3 Duck & Shed

Art & Culture

- 1 London WEST BANK Gallery
- 2 Flow Gallery
- 3 Electric Cinema

Design

- 1 Themes & Variations
- 2 Devon & Devon
- 3 BoConcept

Fashion

- 1 Woodhouse Clothing
- 2 Wolf & Badger
- 3 Melissa Odabash

Food & Drink

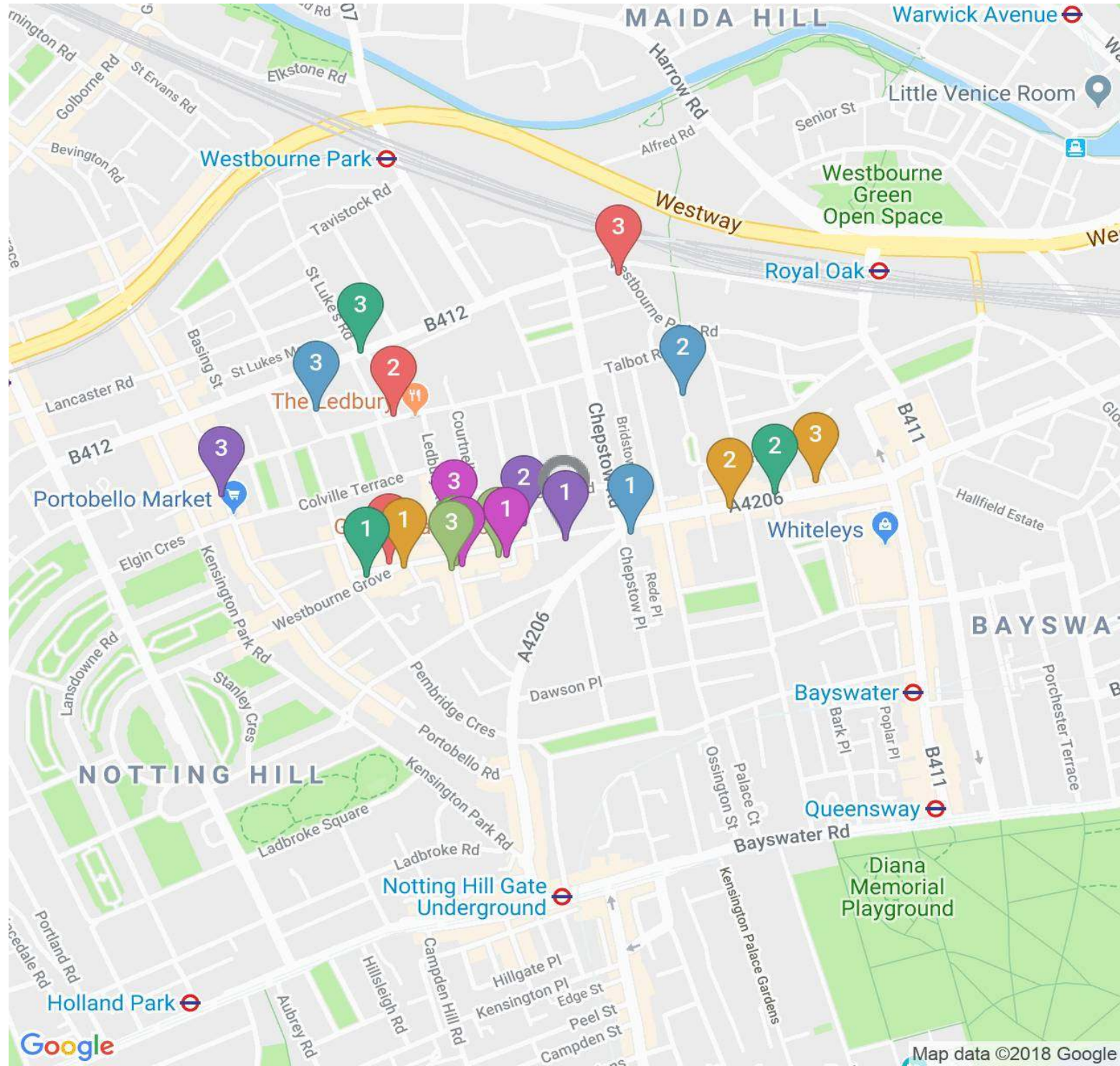
- 1 Granger & Co.
- 2 Beach Blanket Babylon
- 3 Melt

Indulge

- 1 Bodyism
- 2 Strip
- 3 77 Hair Salon

Shopping

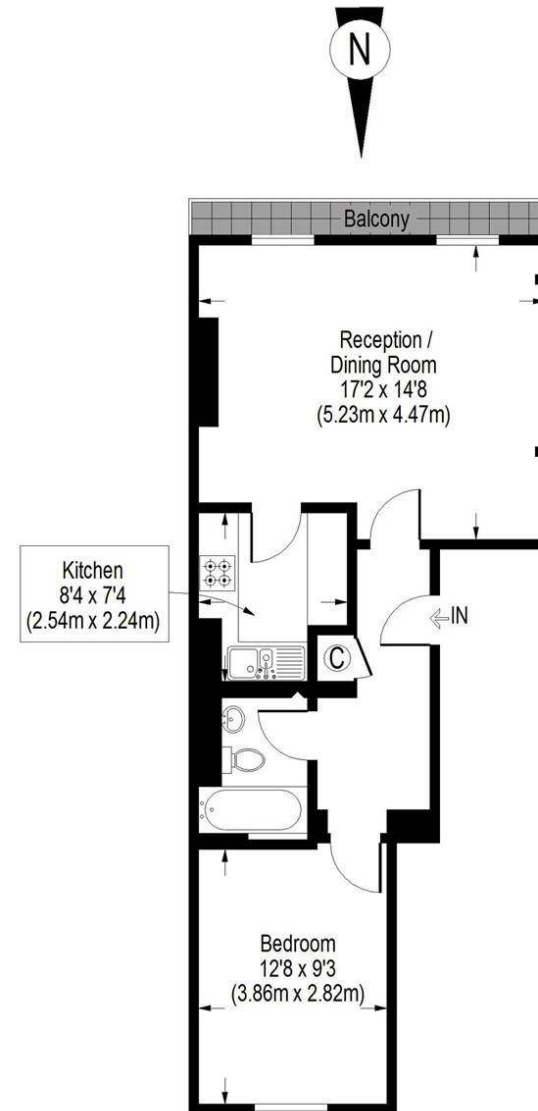
- 1 Wild At Heart
- 2 Planet Organic
- 3 Mutz Nutz



Floor plan

This image is illustrative only

(Not to scale)



First Floor

Approximate Gross Internal Area
550 Sq.Ft. / 51.1 Sq.M.

Floor Plans are for illustrative purposes only and not to scale.
Compliant with RICS code of measuring practice.

Contact

1 Domus Nova Notting Hill

17 Kensington Park Road, London W11 2EU

020 7727 1717

nottinghill@domusnova.com

2 Domus Nova Bayswater

78 Westbourne Grove, London W2 5RT

020 7221 7817

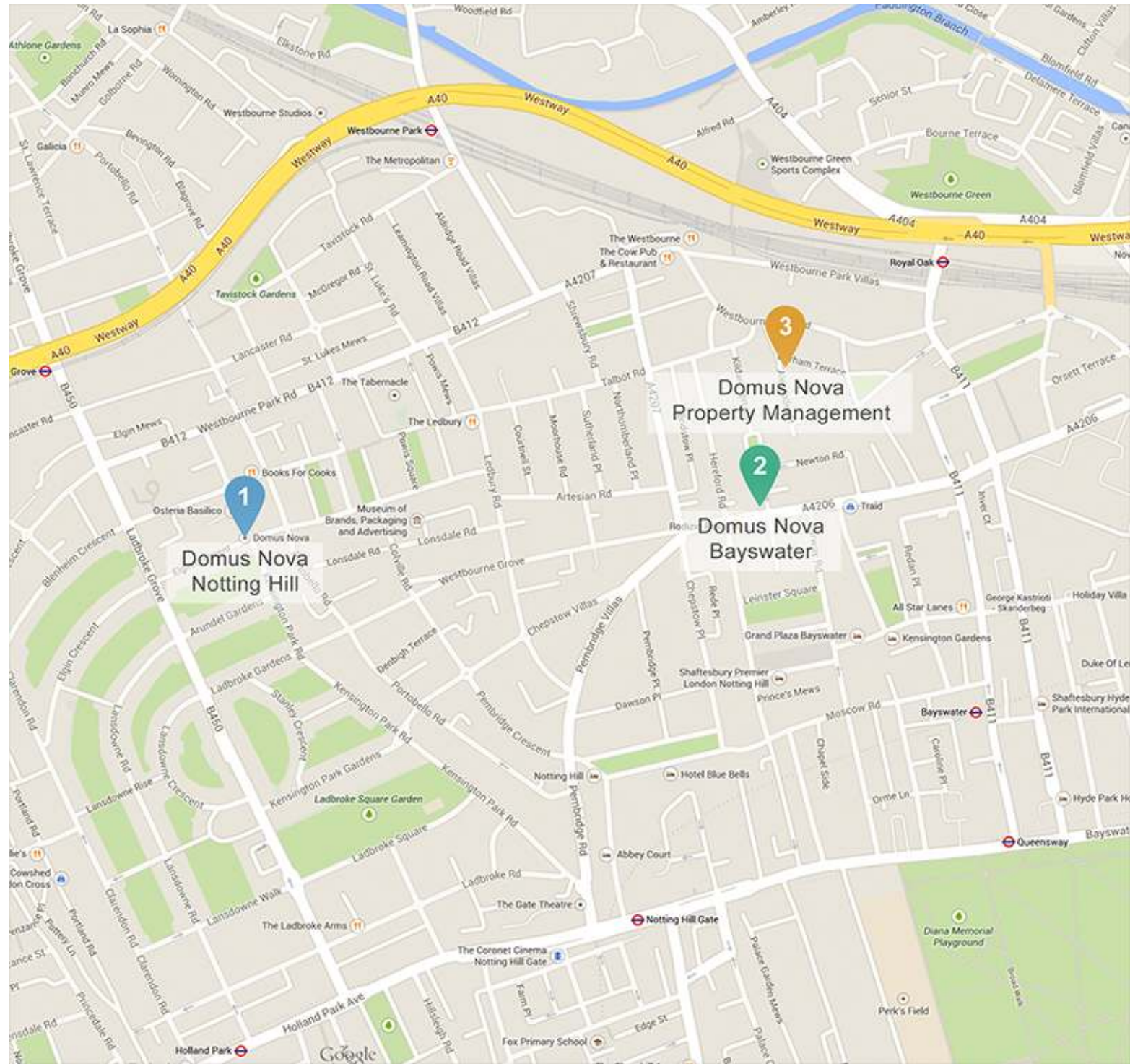
bayswater@domusnova.com

3 Domus Nova Property Management

37 Alexander Street, London W2 5NU

020 7908 9338

management@domusnova.com





DOMUSNOVA.COM