

QUEEN'S COURT, W2  
£2,500,000



## Queen's Court, W2

£2,500,000

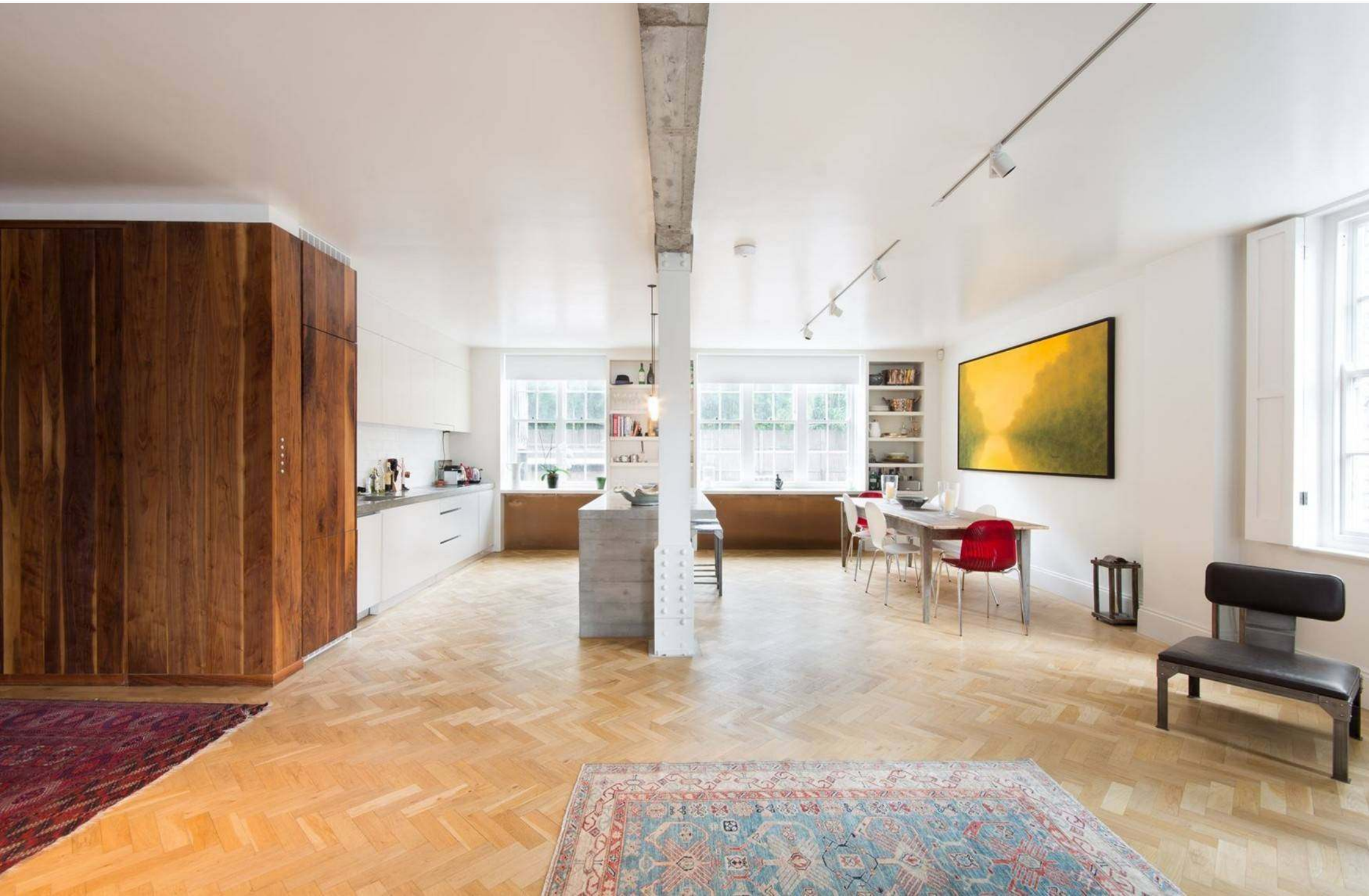
Set in an impressive 1930s mansion block, this awe-inspiring two-bedroom apartment has been architecturally refurbished by Feilden Fowles to incorporate original wall linings, structural beams and a bespoke marble kitchen. Displaying an industrial take on mid-century furnishings, the bright open-plan living area is loft-like and accentuated by a dark, walnut-lined central axis.

Queen's Court is located in the heart of Bayswater, close to the boutiques and eateries found on Westbourne Grove, as well as being on the doorstep of Hyde Park.

- Open-plan living area
- Modern kitchen with stone island
- Dining area
- Master bedroom with en-suite
- Guest bathroom
- Bathroom
- City of Westminster
- Architect: [Feilden Fowles](#)
- Approx. 1,671 sq ft / 155.2 sq m. EPC=E









## Map




 Queen's Court, W2

## Local Information

### Architecture

-  Michaelis Boyd Associates
-  Atelier Chang
-  Robin Monotti Architects

### Art & Culture

-  Debut Contemporary
-  London WEST BANK Gallery
-  Flow Gallery

### Design

-  BoConcept
-  Devon & Devon
-  SCP

### Fashion

-  Woodhouse Clothing
-  Wolf & Badger
-  Marie Chantal

### Food & Drink

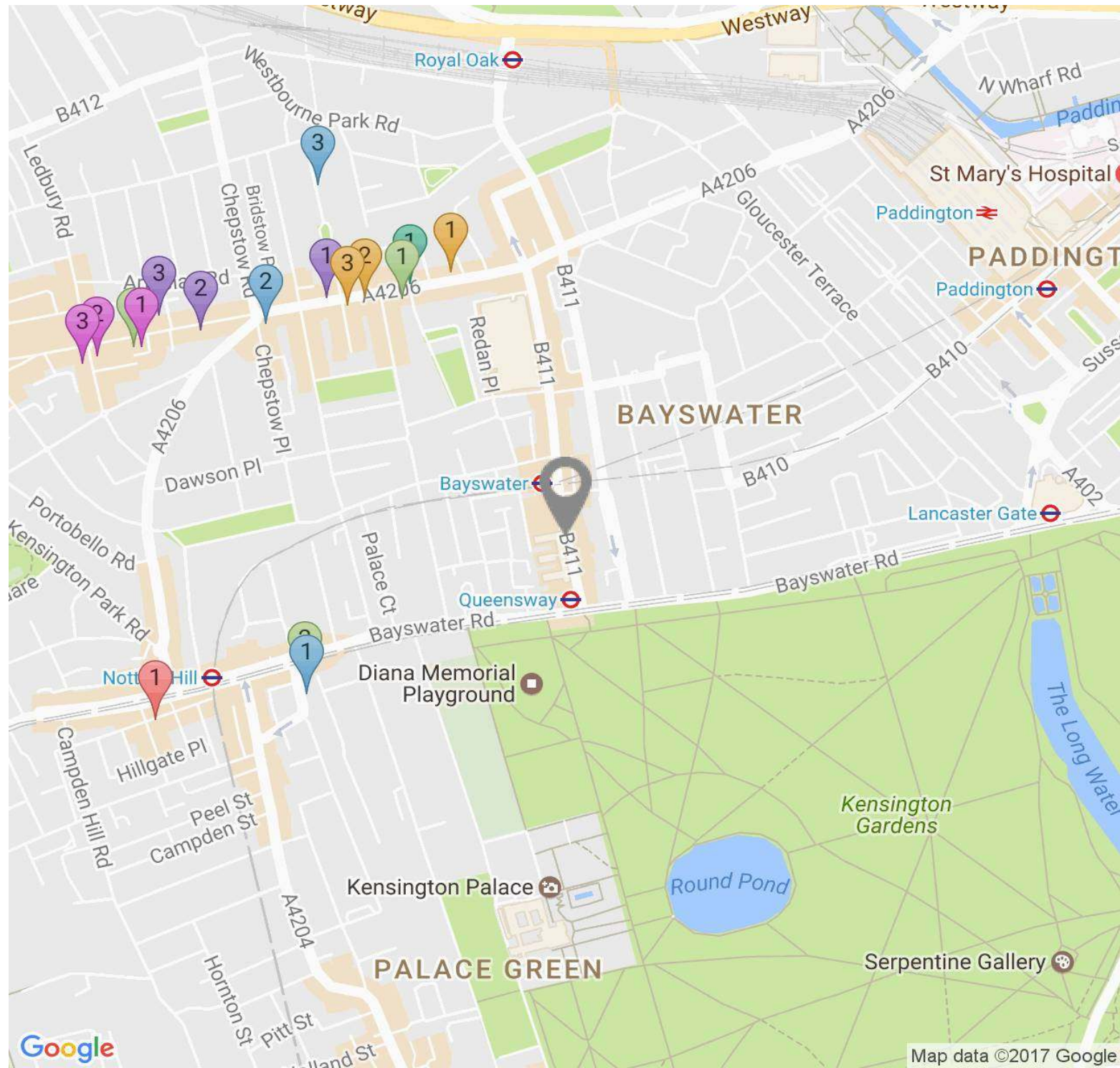
-  65 & King
-  The Shed Restaurant
-  Granger & Co.

### Indulge

-  Heartcore

### Shopping

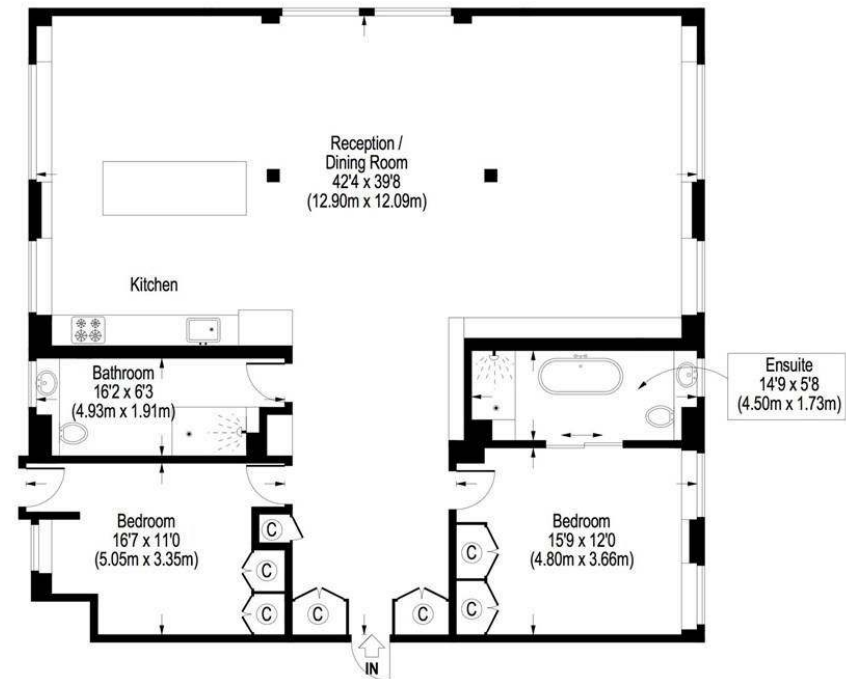
-  Planet Organic



## Floor plan

This image is illustrative only

(Not to scale)



## First Floor

Approximate Gross Internal Area 1671 Sq.Ft. / 155.2 Sq.M.

Floor Plans are illustrative purposes only and not to scale.  
Compliant with RICS code of measuring practice.



## Contact

### 1 Domus Nova Notting Hill

17 Kensington Park Road, London W11 2EU

020 7727 1717

[nottinghill@domusnova.com](mailto:nottinghill@domusnova.com)

### 2 Domus Nova Bayswater

78 Westbourne Grove, London W2 5RT

020 7221 7817

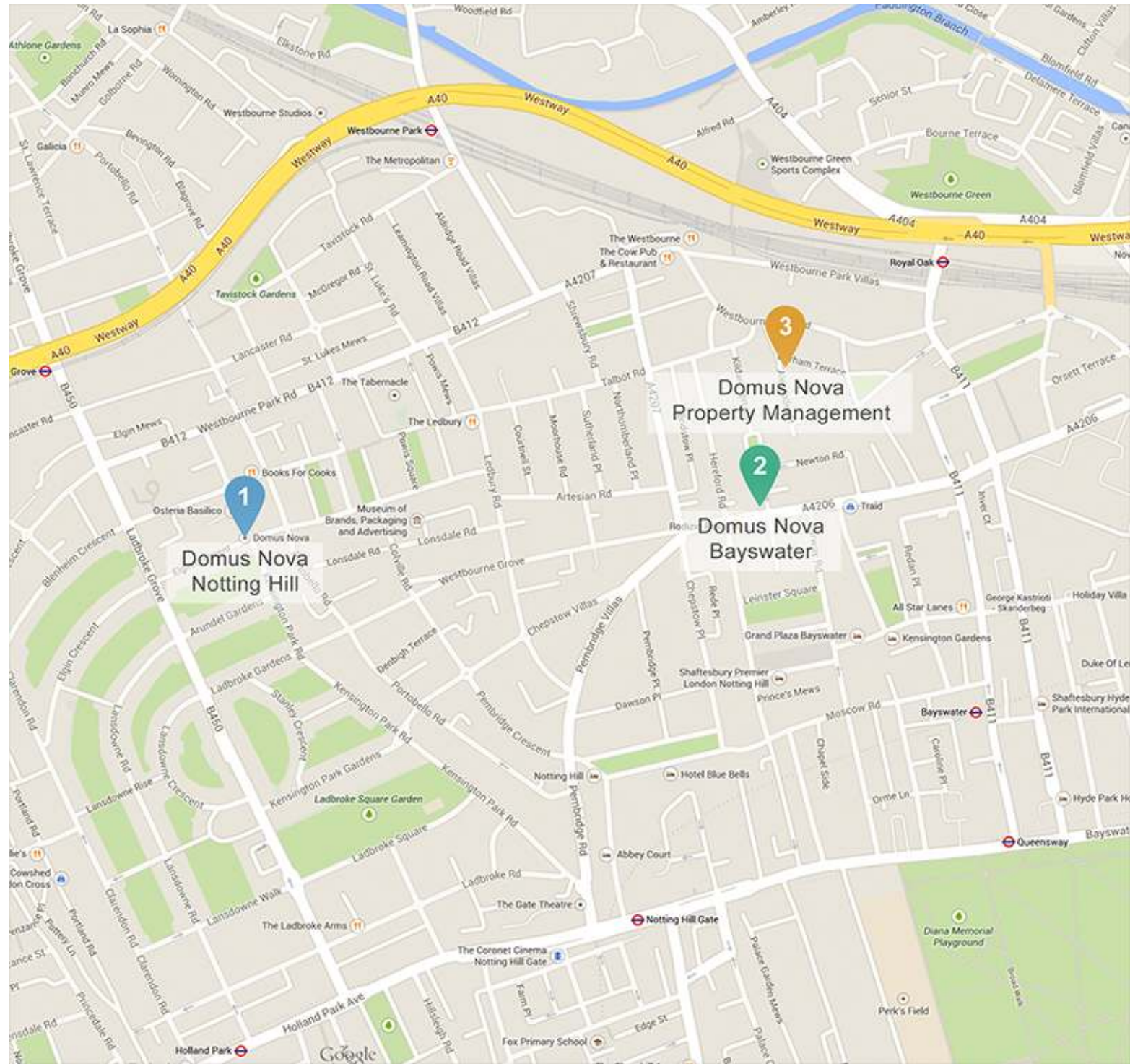
[bayswater@domusnova.com](mailto:bayswater@domusnova.com)

### 3 Domus Nova Property Management

37 Alexander Street, London W2 5NU

020 7908 9338

[management@domusnova.com](mailto:management@domusnova.com)





DOMUSNOVA.COM