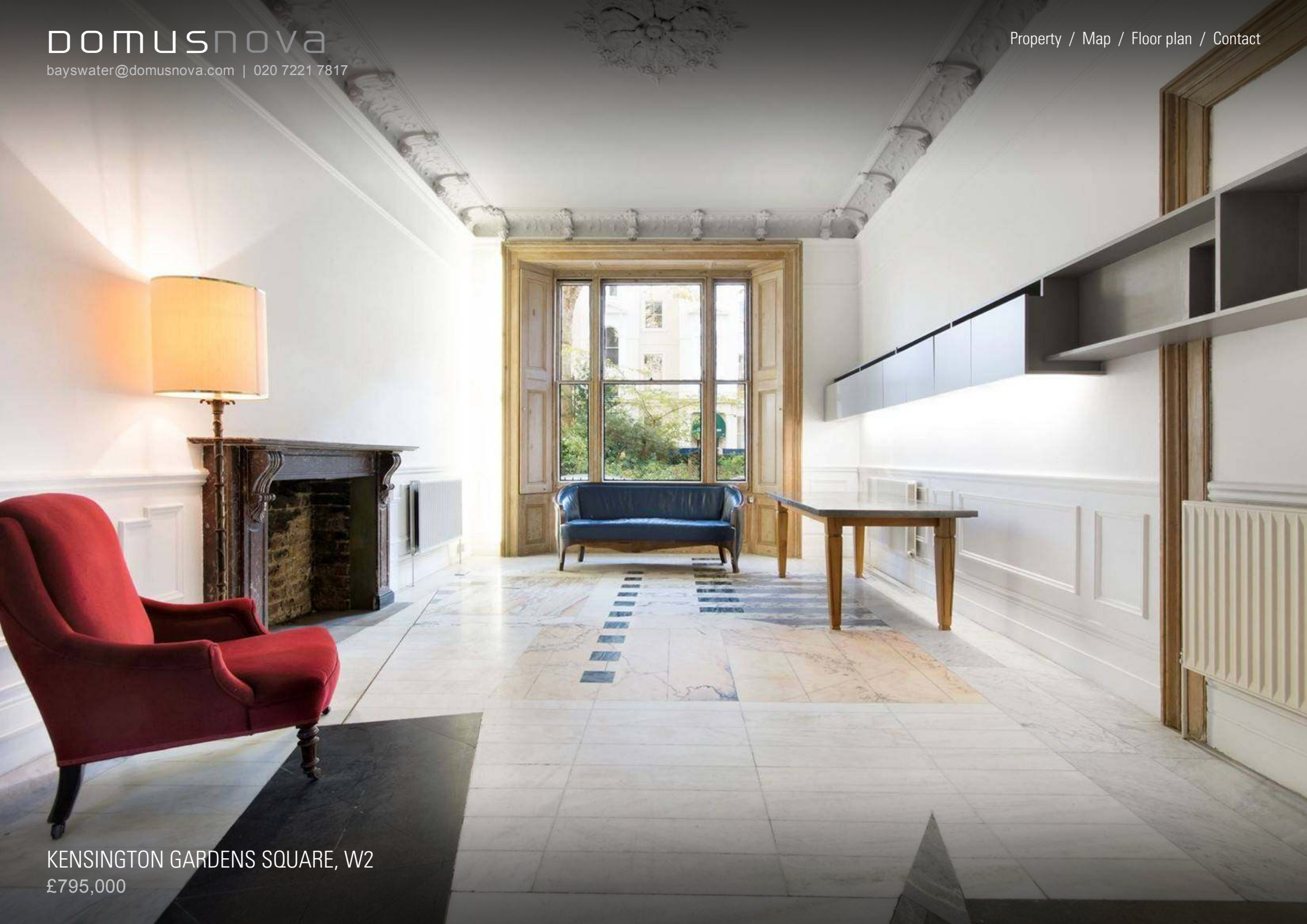


DOMUSNOVA

bayswater@domusnova.com | 020 7221 7817

[Property](#) / [Map](#) / [Floor plan](#) / [Contact](#)



KENSINGTON GARDENS SQUARE, W2

£795,000

Kensington Gardens Square, W2 £795,000

Providing period features and high ceilings, this one bedroom apartment is situated on the raised ground floor of a stucco-fronted building overlooking Kensington Gardens Square. The grand reception room is enhanced by ornate cornicing, an original fireplace and exquisite marble floors, all punctuated by a south-facing bay window.

Located in the heart of Bayswater, this home is conveniently close to the many boutiques and eateries located on Westbourne Grove and Portobello Road.

- Grand reception room
- Integrated kitchen
- Master bedroom suite
- Wood-decked bathroom
- Access to Kensington Gardens Square
- Share of freehold
- City of Westminster
- Approx. 665 sq ft / 59.7 sq m. EPC=D





Map



 Kensington Gardens Square, W2

Local Information





Architecture

-  1 Atelier Chang
-  2 Robin Monotti Architects
-  3 Roland Cowan Architects



Art & Culture

-  1 London WEST BANK Gallery
-  2 Flow Gallery

Design

-  1 BoConcept
-  2 Devon & Devon
-  3 Themes & Variations
-  4 Melodi Horne




Fashion

-  1 Woodhouse Clothing
-  2 Wolf & Badger
-  3 Melissa Odabash




Food & Drink

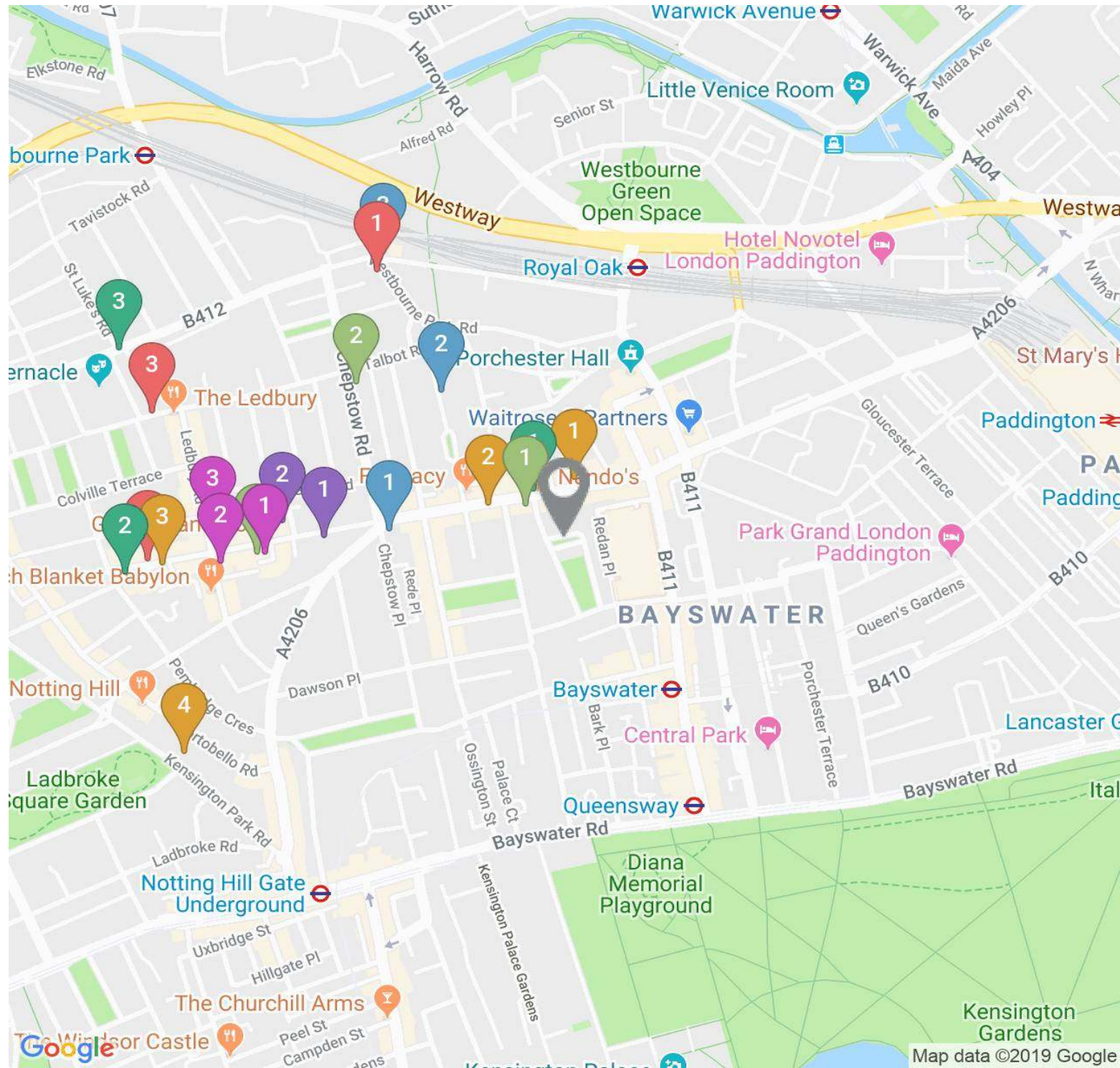
-  1 65 & King
-  2 Haminados
-  3 Granger & Co.

Indulge

-  1 77 Hair Salon
-  2 Bodyism
-  3 Strip

Shopping

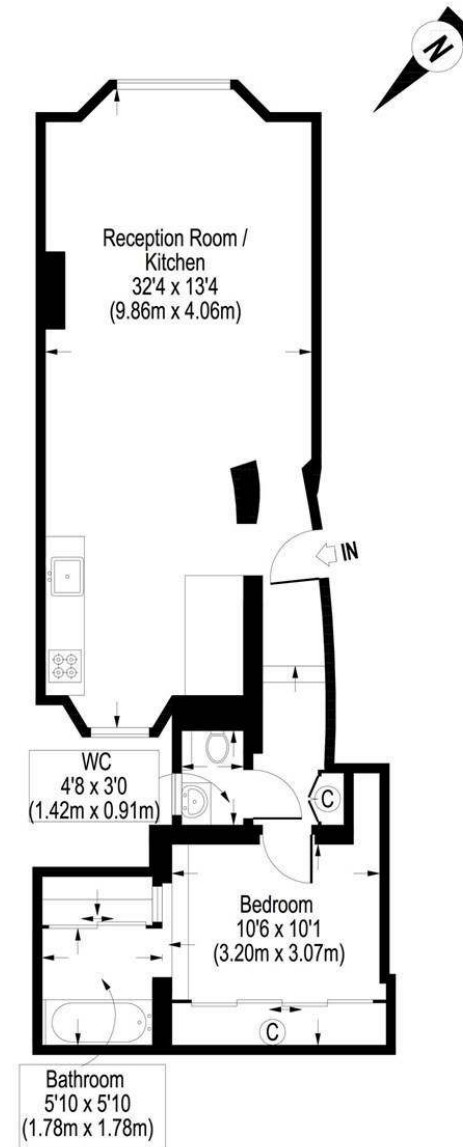
-  1 Planet Organic
-  2 Wild At Heart
-  3 Mutz Nutz



Floor plan

This image is illustrative only

(Not to scale)



Raised Ground Floor

Approximate Gross Internal Area 643 Sq.Ft. / 59.7 Sq.M.

Floor Plans are illustrative purposes only and not to scale.
Compliant with RICS code of measuring practice.

Contact

1 Domus Nova Notting Hill

17 Kensington Park Road, London W11 2EU

020 7727 1717

nottinghill@domusnova.com

2 Domus Nova Bayswater

78 Westbourne Grove, London W2 5RT

020 7221 7817

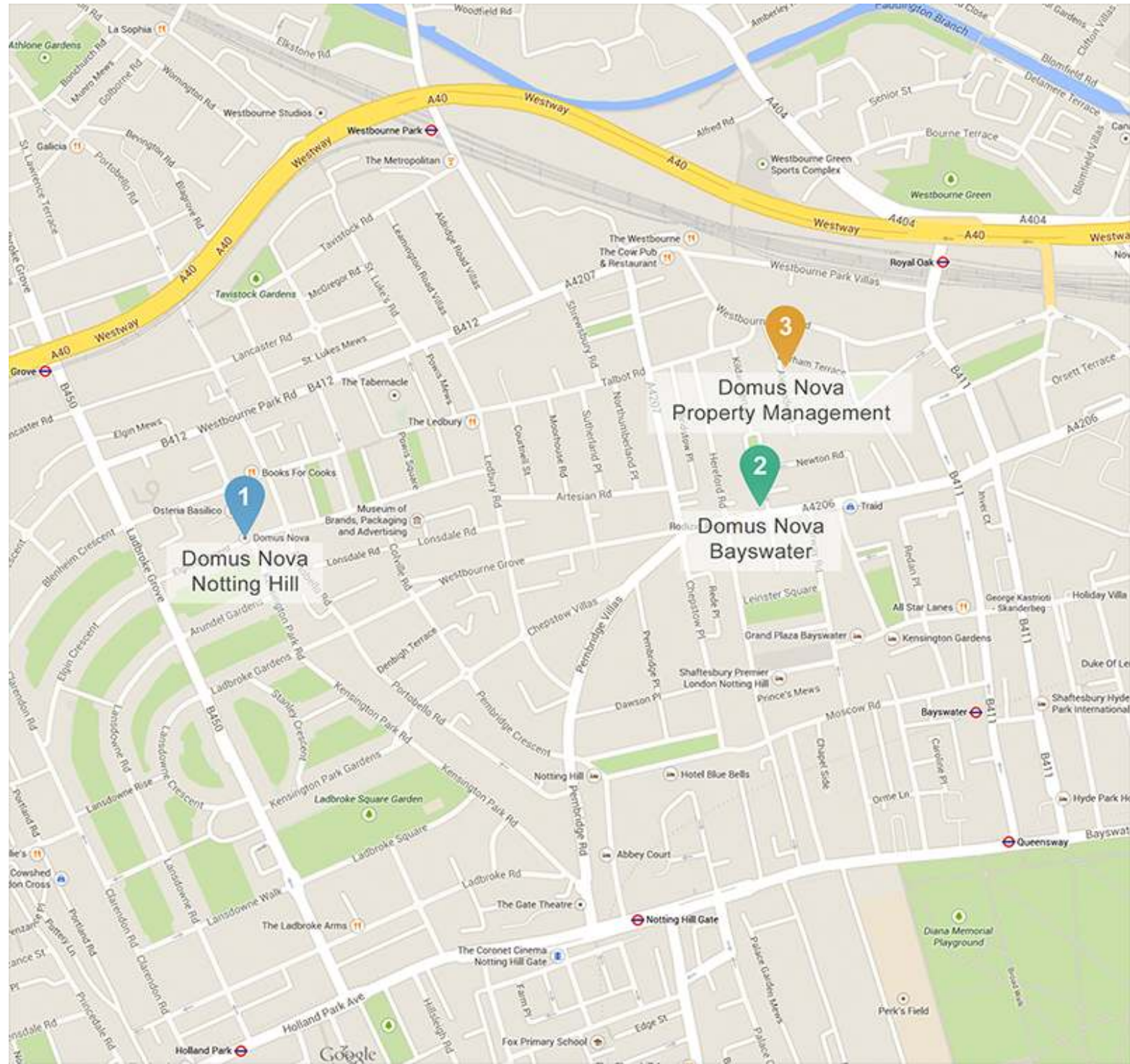
bayswater@domusnova.com

3 Domus Nova Property Management

37 Alexander Street, London W2 5NU

020 7908 9338

management@domusnova.com





DOMUSNOVA.COM